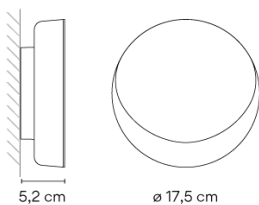
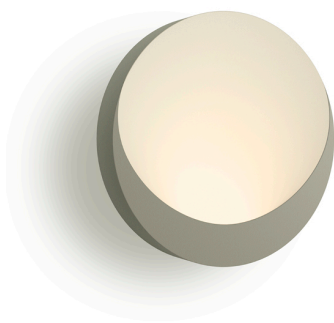


4665

Design By Martín Azúa

The Dots indirect lamp is a compact, circular wall sconce that offers diffuse lighting effects. The luminaire features a concave form that reflects light off its lacquered surface like the glow of the moon at night. Available in four lacquered Chromatica colours.

Model Sheet



Finish

- 13 Off-White
NCS S 1000-N
- 37 Terra Red
NCS S 4040-Y70R
- 27 Brown L1
NCS S 1505-Y50R
- 47 Green L1
NCS S 4005-G80Y

LED temperature color 2700 K

Dimming On/Off

Installation type Surface Canopy

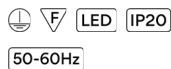
Materials Body: ABS
Driver box: Aluminum

Light source 1 x LED 5,75W 500mA



LED CRI>90 500 lm 87
2700 K

Driver Constant Current 500
220~240 V V 50~60 Hz HZ



Application Wall Lamps

Packaging 1 Box
0.21 m x 0.2 m x 0.13 m
Gross weight 0.65
Net weight 0.4
Vol. 0.0054

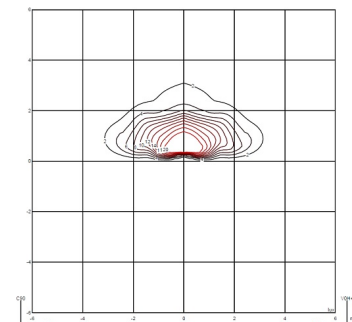
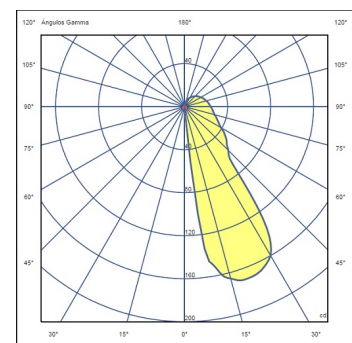
Lighting effect

Indirect lighting

Lamp that emits an upward or backward beam that is reflected by the ceiling or wall.

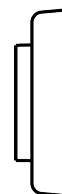


Photometric Data



Efficiency 22.72 lm/W
Coordinate System CG
Total Flux 183.09 lm
Maximum Value 170.27 cd

Other Applications



All of our products come with a five-year warranty. Check our legal terms at www.vibia.com/warranty

Vibia Lighting, S.L.U.

Office / Oficina
Progrés 4-6. 08850 Gavà. Barcelona, Spain.

International T +34 934 796 971
Spain / Portugal T +34 934 796 970

customer.service@vibia.com
vibia.com