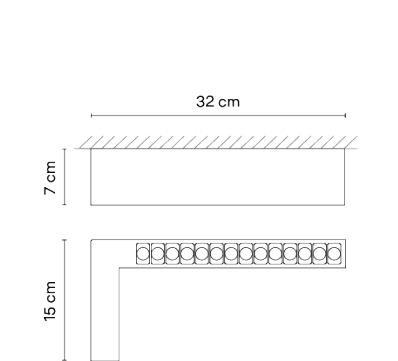
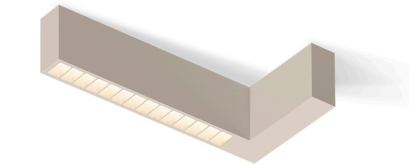
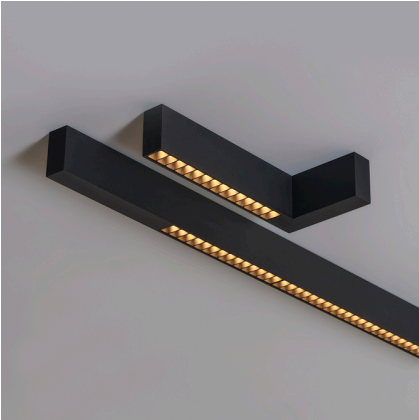


The Offset ceiling light is characterised by its linear design and easy surface installation. The Low-Glare High Efficiency linear model allows for highly energy efficient installations and minimal glare. The structure is aluminium with powerful Led light strips, a versatile fitting offering static and Tunable White lighting options to customise spaces according to individual project requirements. A stylish and sustainable solution for a warm and light filled ambience.

Model Sheet



Finish	11 Black NCS S 8500-N
	24 Beige M1 NCS S 2005-Y50R
	23 Warm White NCS S 0502-Y50R
LED temperature color	2700 K / 3000 K / 3500 K / Tunable White
Dimming	CASAMBI / PROTOPIXEL / PUSH / DALI
Installation type	Surface
Materials	Box: Aluminum Diffuser: PE- Polyethylene Frame: PC- Polycarbonate
Light source	1 x LED STRIP 13,7W 650mA E
LED	CRI>90 1674 lm 122.63 2700 K / 3000 K / 3500 K / Tunable White
Driver	Constant Current 650 220~240 V V 50~60 Hz HZ Dimmable LED IP20 50-60Hz PUSH
Application	Ceiling Lamps
Packaging	Box Gross weighth Net weighth

Lighting effect

Linear High Efficiency - Low Glare

High energy efficiency and low glare levels
UGR<19 for linear light applications



Photometric Data



All of our products come with a five-year warranty. Check our legal terms at www.vibia.com/warranty