

# Ghost

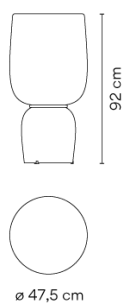
4965

Design By Arik Levy

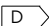
The Ghost table lamp features a stacked silhouette of bulbous forms that radiate a warm, ambient glow. The diffusers are made of mouthblown opal triplex glass in a choice of several colours for mix-and-match lighting effects.

VIBIA

## Model Sheet



Finish	11 Black NCS S 8500-N
LED temperature color	2700 K
Dimming	Push / 1-10V / DALI / Casambi
Installation type	Plug-in

Materials	Ceiling rose: Steel
Light source	2 x LED 19,8W 800mA 
LED	CRI>90 2716 lm 137 2700 K
Driver	Constant Current 800 100~240 V V 50~60 Hz HZ
	<input type="checkbox"/> Dimmable <input checked="" type="checkbox"/> LED <input checked="" type="checkbox"/> IP20
	<input checked="" type="checkbox"/> Bi-volt <input checked="" type="checkbox"/> 50-60Hz <input checked="" type="checkbox"/> PUSH <input checked="" type="checkbox"/> 0-10V

Application	Table Lamps
Packaging	2 Box 0.61 m x 0.61 m x 0.79 m Gross weight 21 Net weight 18 Vol. 0.5226

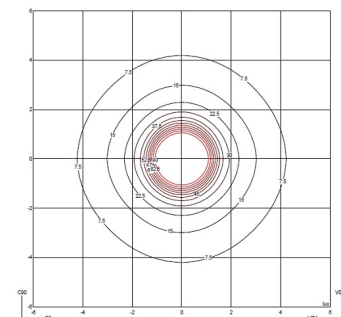
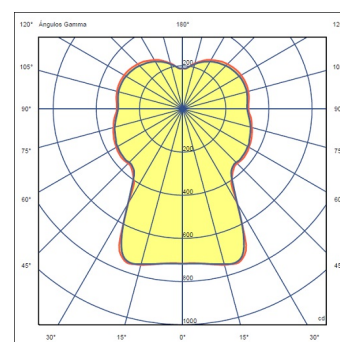
### Lighting effect

#### General lighting

Lamp for general lighting that equally distributes the light in all directions.

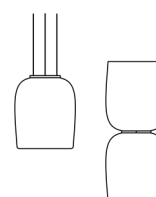


### Photometric Data



Efficiency	78.79 lm/W
Coordinate System	CG
Total Flux	4172.86 lm
Maximum Value	758.32 cd

### Other Applications



All of our products come with a five-year warranty. Check our legal terms at [www.vibia.com/warranty](http://www.vibia.com/warranty)

Vibia Lighting, S.L.U.

Office / Oficina  
Progrés 4-6. 08850 Gavà. Barcelona, Spain.

International T +34 934 796 971  
Spain / Portugal T +34 934 796 970

customer.service@vibia.com  
vibia.com