

# Flat

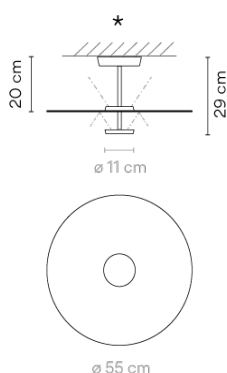
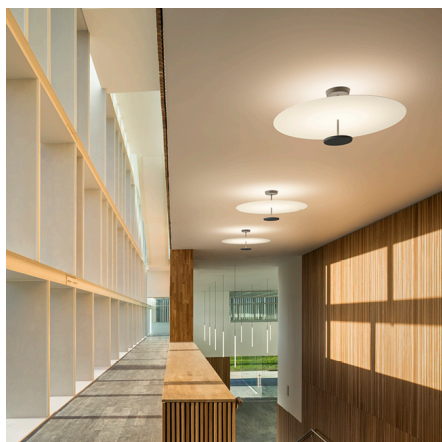
5915

Design By Ichiro Iwasaki

VIBIA

Flat is a ceiling lamp composed of two horizontal discs at various heights that create planes of reflected light. The discs are self-illuminated by reflected light. The Flat ceiling light has a strong graphic quality, combining structure and functionality.

## Model Sheet



**Finish** 10 White  
NCS S 0300-N

**LED** 2700 K / 3500 K

**Control** Push; 1-10V; DALI

**Electrical connection** Surface Canopy

**Light source** 2 x LED PLATE 13,5W 700mA



**LED** CRI>90 3480 lm 128.88  
2700 K / 3500 K

**Driver** Constant Current 700 mA 110~240 V  
50/60 Hz



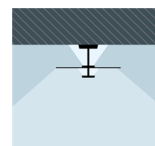
**Application** Ceiling

**Packaging** 1 Box  
0.71 m x 0.71 m x 0.13 m  
Gross weight 14.8 kg  
Net weight 4.75 kg  
Vol. 0.0655 m3

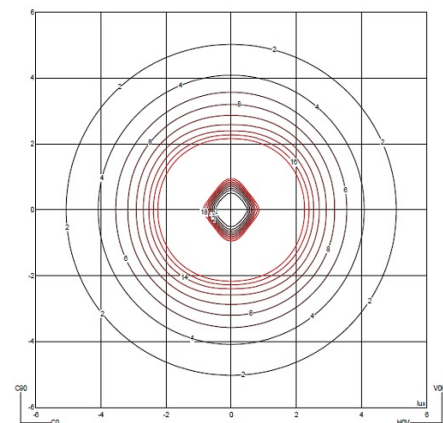
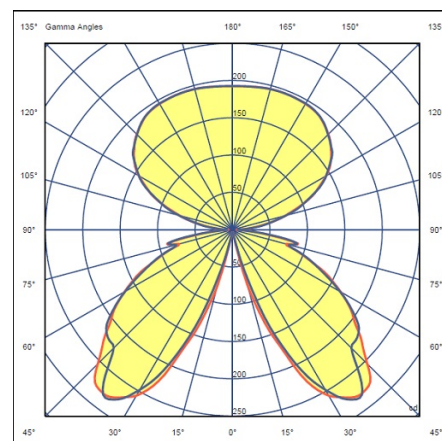
### Lighting effect

#### Reflected

Creation of visual hierarchies within the luminaire itself, emphasising the materiality and texture of the



### Photometric Data



**Efficiency** 61.57 lm/W  
**Coordinate System** CG  
**Total Flux** 1748.47 lm  
**Maximum Value** 338.42 cd

Min. quantity, upcharge and extra lead time apply

All of our products come with a five-year warranty. Check our legal terms at [www.vibia.com/warranty](http://www.vibia.com/warranty)

Vibia Lighting, S.L.U.

Office / Oficina  
Progrés 4-6, 08850 Gavà. Barcelona, Spain.

International T +34 934 796 971  
Spain / Portugal T +34 934 796 970

[customer.service@vibia.com](mailto:customer.service@vibia.com)  
[vibia.com](http://vibia.com)