

# Bind solo

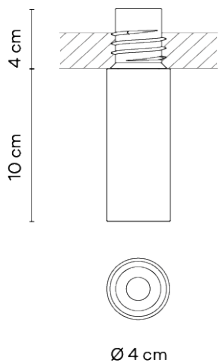
## 6680

VIBIA





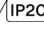
Design By undefined

Bind Solo provides accent down light via a surface mounted fitting. The angle of aperture creates high contrasts over long distances.

### Model Sheet



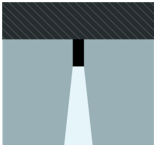
Min. quantity, upcharge and extra lead time apply

Finish	 04 Black NCS S 8500N
	 24 Beige M1 test ral
LED	2700 K / 3000 K / 3500 K
Control	CASAMBI / On / Off / PUSH DALI
Light source	1 x LED 5,2W 300mA 
LED	CRI>90 530 lm 101,9 2700 K / 3000 K / 3500 K
Driver	Constant Current 300 mA 220~240 V 50/60 Hz   50-60Hz
Application	Ceiling
Packaging	1 Box 0.15 m x 0.15 m x 0.075 m Gross weight 0.73 kg Net weight 0.25 kg Vol. 0.0016 m3

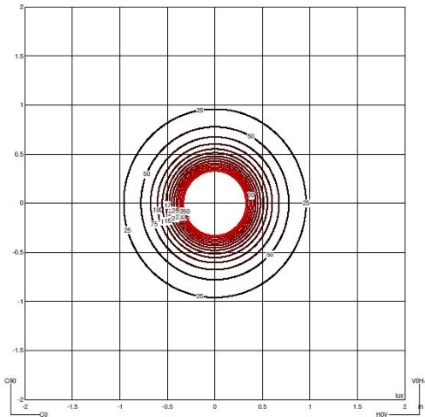
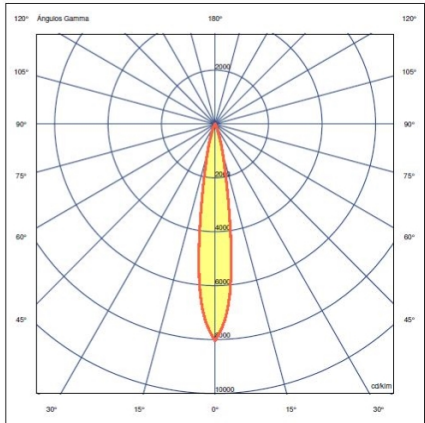
#### Lighting effect

##### Narrow Accent Downlight

Angles less than 20°. Suitable for generating high contrasts or projections from far away.



#### Photometric Data



Efficiency	90.928 lm/W
Coordinate System	CG
Total Flux	491.0 lm
Maximum Value	8039.76 cd/klm

All of our products come with a five-year warranty. Check our legal terms at [www.vibia.com/warranty](http://www.vibia.com/warranty)

Vibia Lighting, S.L.U.

Office / Oficina  
Progrés 4-6, 08850 Gavà. Barcelona, Spain.

International T +34 934 796 971  
Spain / Portugal T +34 934 796 970

[customer.service@vibia.com](mailto:customer.service@vibia.com)  
[vibia.com](http://vibia.com)