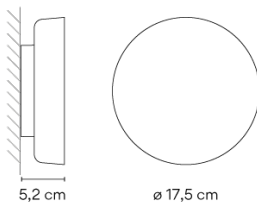
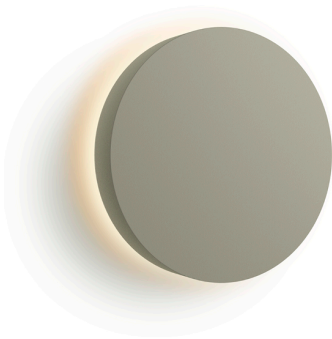


4675

Design By Martín Azúa

The Dots ambient lamp is a compact, circular wall sconce that offers diffuse lighting effects. The fixture rests slightly apart from the wall, radiating an indirect glow around its perimeter like a halo. Available in solid wood from sustainable forests or lacquered in four Chromatica colours.

## Model Sheet



## Finish

-  83 American walnut  
Natural Wallnut Wood
-  13 Off-White  
NCS S 1000-N
-  37 Terra Red  
NCS S 4040-Y70R
-  27 Brown L1  
NCS S 1505-Y50R
-  47 Green L1  
NCS S 4005-G80Y

## LED temperature color

2700 K

## Dimming

On/Off / 1-10V / TRIAC

## Installation type

Surface Canopy

## Materials

Body: ABS  
Driver box: Aluminum

## Light source

1 x LED PLATE 4,5W 500mA



## LED

CRI>90 400 lm 89  
2700 K

## Driver

Constant Current 500  
100~240 V V 50~60 Hz HZ



Bi-volt 50-60Hz 0-10V 1-10V

## Application

Wall Lamps

## Packaging

1 Box  
0.21 m x 0.2 m x 0.13 m  
Gross weight 0.65  
Net weight 0.4  
Vol. 0.0054

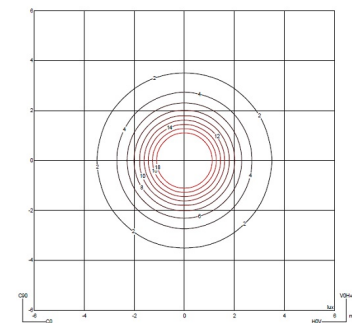
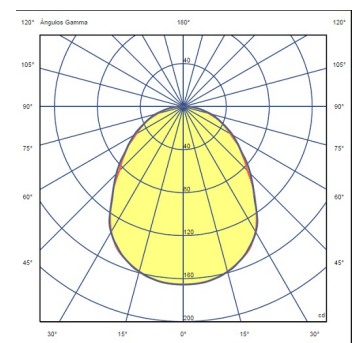
## Lighting effect

## Indirect lighting

Lamp that emits an upward or backward beam that is reflected by the ceiling or wall.

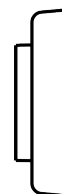


## Photometric Data



Efficiency 65.93 lm/W  
Coordinate System CG  
Total Flux 406.13 lm  
Maximum Value 165.51 cd

## Other Applications



All of our products come with a five-year warranty. Check our legal terms at [www.vibia.com/warranty](http://www.vibia.com/warranty)

Vibia Lighting, S.L.U.

Office / Oficina  
Progrés 4-6. 08850 Gavà. Barcelona, Spain.

International T +34 934 796 971  
Spain / Portugal T +34 934 796 970

customer.service@vibia.com  
vibia.com