

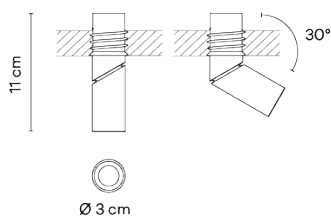
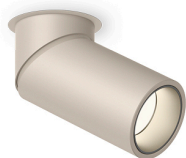
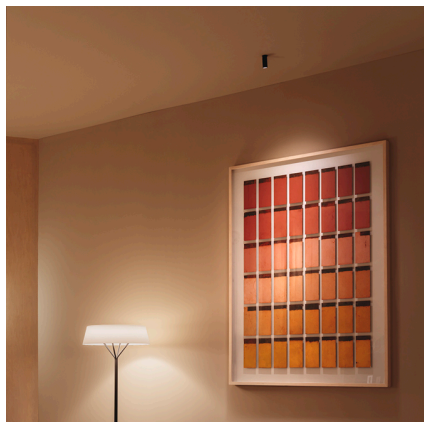
# Bind solo

6624

VIBIA

The Bind Solo spotlight allows for visual gradations as well as highlighting functional zones, objects and architectural elements.

## Model Sheet



Finish	24 Beige M1 test ral
	04 Black NCS S 8500N
LED temperature color	2700 K / 3000 K / 3500 K
Dimming	CASAMBI / PUSH DALI / NO DRIVER / On/Off
Installation type	Remote driver Built-in Micro

**Materials** Body: Aluminum  
Optics: PC- Polycarbonate

**Light source** 1 x LED 4.3W 250 mA



**LED** CRI>90 451 lm 104,9  
2700 K / 3000 K / 3500 K

**Driver** Constant Current 250  
220~240 V V 50~60 Hz HZ



**Application** Ceiling Lamps

**Packaging** 1 Box  
0.15 m x 0.15 m x 0.075 m  
Gross weight 0.68  
Net weight 0.2  
Vol. 0.0016

### Lighting effect

#### Accent

Narrow: Angles less than 20°. Suitable for generating high contrasts or projections at far distances. Medium: Angles between 20° and 40°. Suitable for generating medium contrasts or projections at medium distances. Wide: Angles greater than 40°. Suitable for generating moderate contrasts or projections at near distances.

### Photometric Data

All of our products come with a five-year warranty. Check our legal terms at [www.vibia.com/warranty](http://www.vibia.com/warranty)

Vibia Lighting, S.L.U.

Office / Oficina  
Progrés 4-6. 08850 Gavà. Barcelona, Spain.

International T +34 934 796 971  
Spain / Portugal T +34 934 796 970

customer.service@vibia.com  
vibia.com