

Bind

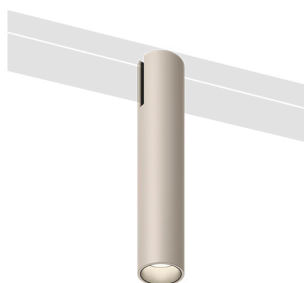
6520

Design By Martín Azúa

VIBIA

Bind offers downward accent lighting through a shallow fixture. Its degree of aperture allows for creating high contrasts over long distances.

Model Sheet



Optional : Extra cable length

Min. quantity, upcharge and extra lead time apply

Finish 04 Black
NCS S 8500N

LED 2700 K

Control PUSH 1-10V DALI CASAMBI

Electrical connection To track

Light source 1 x LED 5,2W 300mA
F

LED CRI>90 380 lm 92,7
2700 K

Driver 350 mA 48 V
F X IP20

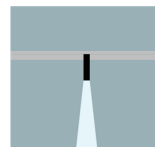
Application Hanging

Packaging 1 Box
0.15 m x 0.3 m x 0.075 m
Gross weight 0.68 kg
Net weight 0.18 kg
Vol. 0.0033 m3

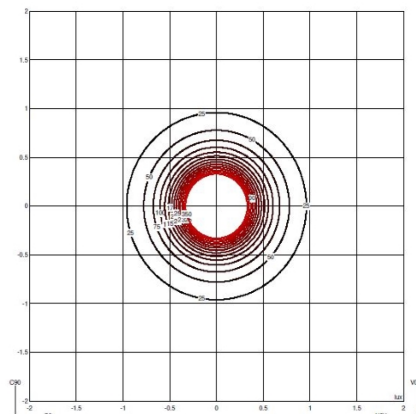
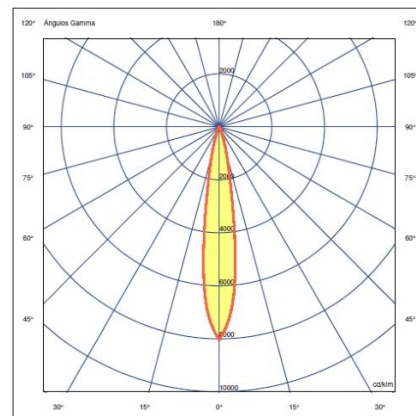
Lighting effect

Narrow Accent Downlight

Angles less than 20°. Suitable for generating high contrasts or projections from far away.



Photometric Data



Efficiency 90.928 lm/W
Coordinate System CG
Total Flux 491.0 lm
Maximum Value 8039.76 cd/klm

All of our products come with a five-year warranty. Check our legal terms at www.vibia.com/warranty

Vibia Lighting, S.L.U.

Office / Oficina

Progrés 4-6, 08850 Gavà. Barcelona, Spain.

International T +34 934 796 971

Spain / Portugal T +34 934 796 970

customer.service@vibia.com

vibia.com